

Tips

How do I refill the LF-ONE?

Water will be absorbed and evaporate, and may evaporate more quickly in a dry environment. To refill the water in your unit, lift the top tray lid (L4) and pour water in. After pouring water, check the water gauge located on the bottom tray to avoid over filling.

How long should I leave the lights on?

For most crops grown in the LF-ONE, 12-14 hours per day will be the optimal amount of light. You can also do a little experimenting by observing the behavior and growth of your plants.

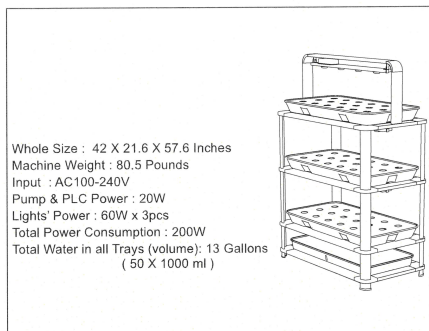
My sprouts don't appear to be growing after I transplanted them, what can I do?

It may take 4 or more days for your plants to get growing once transplanted. Lift up one of the net baskets and check to see if the roots are white and reaching out of the net. This is a better indicator of initial growth than plant size.

My plants seem weak, what can I do?

Along with watering, feeding, and providing light – airflow will be a key factor in growing strong plants. Place your LF-ONE where it will get good airflow, and avoid enclosed areas with no ventilation.

Specification :

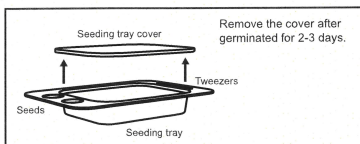


Questions? We Have Answers.

The LF-ONE is simple to use and suitable to grow a variety of plants. If you do happen to encounter any problems using the unit, you can always reach us at **804.997.9398** or www.growpulse.com.



STEP 1 • Nursery



1. Clean the tray by rinsing with water. Rinse the foam with water, soak and squeeze a couple times to loosen the fabric. Soak the foam again and place it in the tray
2. Prepare the seeds and place them on the container slot(s). Pick one seed at a time with the tweezers and drop a seed into a cavity per block in the foam. No need to stuff the seed into the slot, just let it sit on the foam.
3. Fill the tray with water about half way. The foam will absorb more water – this may take about 1 to 2 minutes. Make sure to keep the tray about half-filled with water to keep the foam wet but not soaking the seed.
4. Put the cover on the seeding tray properly and keep tray in a dark place with an ambient temperature between 77-85°F. Inspect daily and use a spray bottle to spray water over the seeds and/or fill the tray with more water as mentioned above. The foam should turn yellow, then brown, in about two days and is normal; if it is still white and looks new at that point, there is not enough water for [seeding].
5. Seeds will germinate and sprout in about two days. The whole germination cycle may take one to two weeks until the seedlings have grown big enough, with roots reaching out of the foam bottom, until they are ready to transplant to grow in your LF-ONE. It is recommended to use nutrients when sprouting begins for faster and better results
6. After the seeds have begun to germinate, you can put the tray on the L4 Grow tray, under the set the light for 4-5 hours per day. After one week, you can transfer the plants to the grow trays.

STEP 2 • Preparing your LF-ONE for transplanting

1. Remove tray L2 from the second level.
In order to remove trays from Levels 1, 2, and 3, we recommend tilting the trays length-wise at a 30-45° angle and rotating it out. Make sure there is little to no water in order to avoid spillage.
2. Remove the lid from the water tank (L1) and fill to max capacity. (The minimum and maximum capacities are indicated on the measurement gauge on the front of the tray.)
3. Now it is time to prepare the food for your plants! Your LF-ONE comes with three sets of nutrient mix initially. Each set contains both a Nutrient A and a Nutrient B package. You will need to use one full set for each grow cycle.
4. Fill the measuring cup with ¾-1 liter of water. Put three scoops of Nutrient A formula into the water and stir to dissolve. Let the stirred mixture sit for approximately 5 minutes until the formula has dissolved and then pour the solution into the water tank.
5. Repeat point 4, only this time with Nutrient B.
CAUTION:
*Never mix the two nutrient formulas together in powder form or directly into the water tank.
*Avoid contact with eyes and keep away from children.
6. Once you have mixed your nutrients and initially filled the water tank, you can place the grow trays (L2, L3, L4) onto your LF-ONE.
7. Connect power. The Program Logic Controller (PLC) can be set to program irrigation and LED grow light timers for the growth cycle. You only have to set it once for the system to run automatically until you are ready to harvest your plants and/or disconnect the power.
8. Once programmed, water will begin circulating from the water tank to the grow trays. After about 60 minutes it will be necessary to fill more water into the system due to water now being dispersed and flowing throughout.
You can refill your LF-ONE after it is running by using a kettle or similar vessel. Pour the water into the top tray, either by lifting up the grow shelf or pulling out one of the net-baskets and pouring into that hole. (It may take several rounds of refills to get to a desired water level.)

STEP 3 • Programming your settings

In order to program your settings for irrigation and lighting schedule, follow these steps:

1. On the PLC panel, press and hold the SET button for 10 seconds. You will see a flashing screen. Start by setting the date and time. Use the (+/-) to forward to the desired date and time. Pushing the SET button will cycle you through to program the other settings. (Holding down the SET button for a few seconds will finish the programming.)
2. For irrigation settings (i.e. when the pump will be on or off), push the SET button two times after setting the time, until the first PUMP column is blinking.
We recommend setting the pump to 30 minutes on and 30 minutes off to keep your plants happy and healthy. (Note: by adjusting the time for either "on" or "off," the other is automatically adjusted to add up to an hour.)
The irrigation program will loop continuously until you either unplug your LF-ONE, or if you program the pump to be "off" for 60 minutes.
3. For grow lights settings (i.e. what time and for how long the lights will be on), push the SET once after setting the pump schedule. The SEED row is the timer for the top shelf (L4). GROW controls the timer for the lower two shelves (L2, L3).

The lights are programmed on a 24-hour clock (i.e. military time). Program your desired lighting schedule, setting the left column to when you want the lights to turn on and the right column to turn them off. (E.g. for a 14-hour cycle you can set them to turn on at 08:00 and turn off at 22:00, or 10:00PM.) The light schedule will run automatically throughout the grow cycle until it is otherwise programmed or the LF-ONE is unplugged.



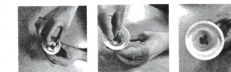
STEP 4 • Transplant

1. When the sprouts have grown approximately 1/4 inch tall, they are ready to be transplanted to the grow trays in the LF-ONE system.



2. Separate each block containing a sprout from the foam substrate into its own stand-alone foam block, then place it in a net-basket.

3. Place each net-basket into an opening on the shelf of a grow tray.



4. Repeat this until you fill all 18 openings per grow tray. You can grow one type of crop per each grow tray, or even mix and match! Note that germination and harvest times could differ depending on the crop.

5. Transplanting for all three grow trays can take up to half an hour. We recommend you activate the pump and let the water circulate before placing the net-baskets in the trays.



Made in china

Copyright 2018 Growpulse
All rights reserved
www.growpulse.com